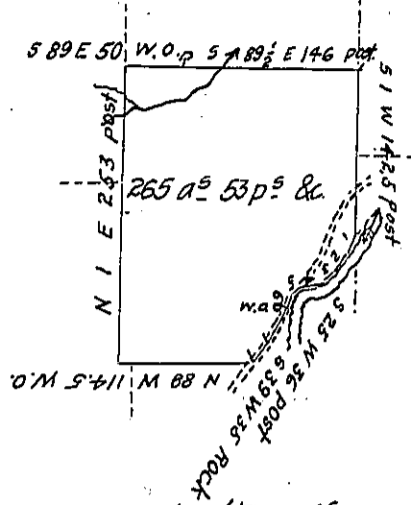


R. McCutchen

Courses & distances up
Sandy Creek, from post
N° 1 S 22 W 15
" 2 S 35 W 18
" 3 S 43 W 13
" 4 S 80 W 17
" 5 S 45 W 10
" 6 S 20 W 11 to W.O.

Claimed by
D. Temple

S. Rhoads



R. Nicholson

C 47-47

Wm Gibson's Heirs

Draft of a tract of land situate in French Creek township
Venango county, west of the Allegheny River, and North of & partly ad-
joining Sandy Creek (being the South western part of a larger tract
settled by Seth Jewell & others.)

Surveyed 25th October 1838, for Aaron McKissick on im-
provement & settlement.

I Certify the above to be a correct copy of an entry in
the Survey Book of Richard Irwin, late Deputy Surveyor of Venango
County. Given under my hand this 23rd day of December 1839

Thomas Hamilton D.S.

Jacob Sallade Esq^r

Surveyor General of Pa.

IN TESTIMONY that the above is a copy of the original remaining on file in
the Department of Internal Affairs of Pennsylvania, made
conformably to an Act of Assembly approved the 16th day of
February, 1833, I have hereunto set my Hand and caused
the Seal of said Department to be affixed at Harrisburg,
this fifth day of March 1906

La a c R Hoover
Secretary of Internal Affairs.